



DOCUMENT: A202600830
January 23, 2026 at 7:33 AM
AUDRA CASTEEL
PENNINGTON COUNTY, SD
Pages: 4 Fee Amount: \$30.00

Prepared By:
City of Box Elder
420 Villa Drive
Box Elder, SD 57719
(605) 923-1404

CITY OF BOX ELDER PENNINGTON & MEADE COUNTIES STATE OF SOUTH DAKOTA

RESOLUTION NO. 26-07

**A RESOLUTION TO APPROVE A PETITION TO VACATE A PORTION OF THE
MAJOR DRAINAGE EASEMENT ON LOT B AND LOT C OF TRACT 3 OF
BERGER SUBDIVISION IN PENNINGTON COUNTY, SOUTH DAKOTA**

WHEREAS, the City of Box Elder has received a valid petition to vacate a portion of a major drainage easement within the jurisdiction of Pennington County, South Dakota by the owners of the properties with the portion of the major drainage proposed to be vacated described below:

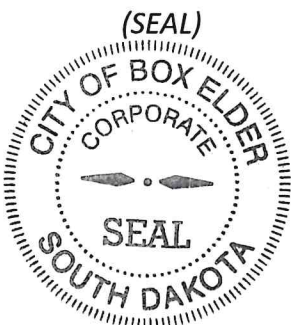
The portion of major drainage easement located on Lot C and Lot B of Tract 3 of Berger Subdivision, Section 14, T2N, R8E, BHM, Box Elder, Pennington County, South Dakota, as shown on the attached Exhibit A; and

Revised

WHEREAS, the Common Council of the City of Box Elder deems to vacate said major drainage easement.

NOW, THEREFORE, BE IT RESOLVED by the Common Council of the City of Box Elder, that in consideration of the vacation of the major drainage easement be hereby approved and the Mayor of the City of Box Elder hereby authorized to endorse this resolution and certify its correctness.

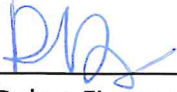
PASSED, APPROVED AND ADOPTED this 20 day of January, 2026.





Larry Larson, Mayor


ATTEST:



Renee Baker, Finance Officer

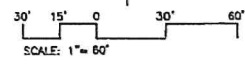
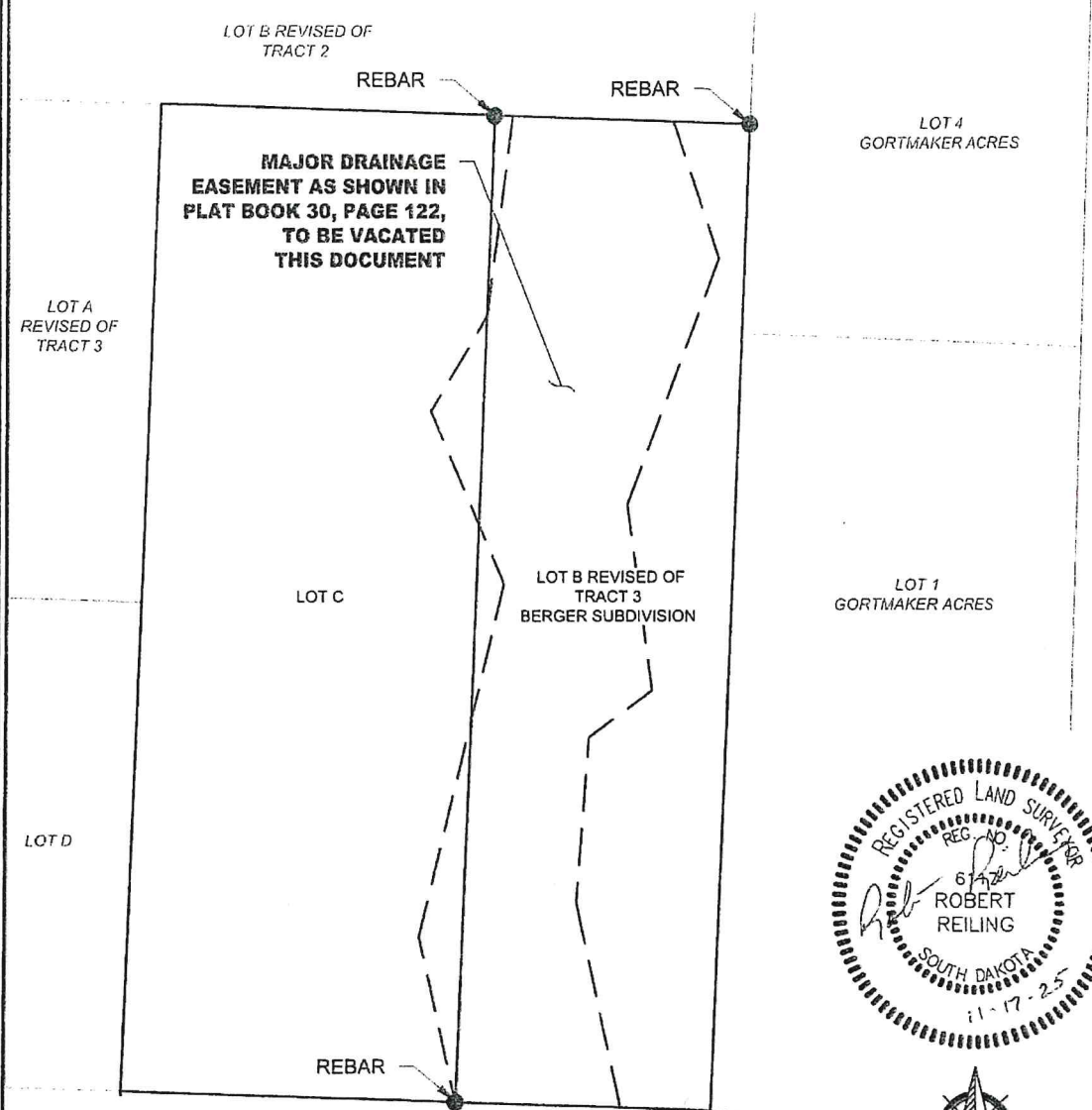
ATTESTATION

I, Chaz Kokesh, the City Clerk of the City of Box Elder, South Dakota, do hereby attest and state the above resolution was published in the manner required by law and that all procedures required by the State of South Dakota law were complied with. This resolution shall become effective on February 17, 2026.



Chaz Kokesh, City Clerk

EXHIBIT 'A'
VACATION OF MAJOR DRAINAGE EASEMENT
 LOCATED IN LOT C AND LOT B REVISED OF TRACT 3
 BERGER SUBDIVISION
 OF SECTION 14, T2N, R8E, BHM
 PENNINGTON COUNTY, SOUTH DAKOTA



LEGEND

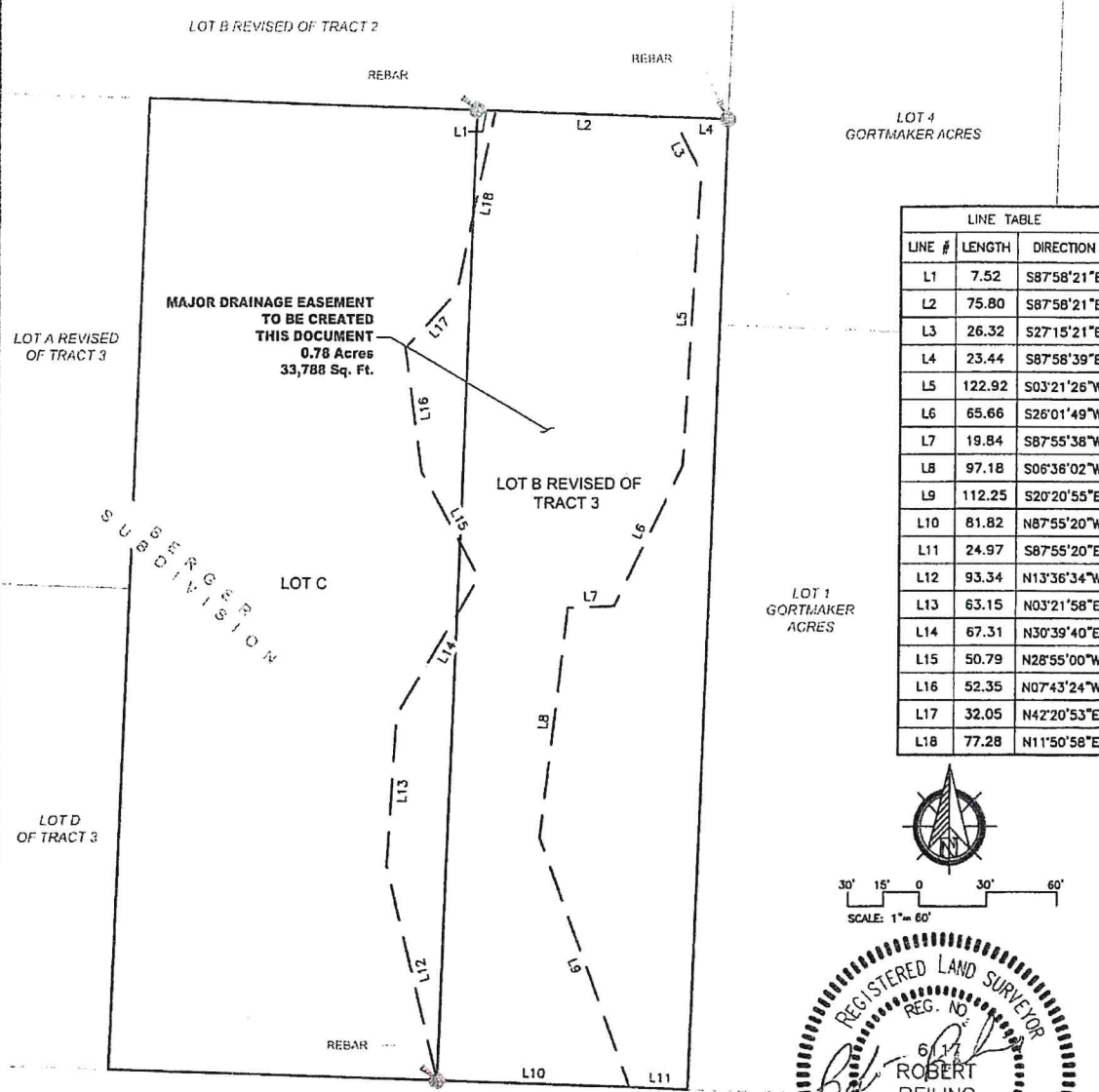
● DENOTES FOUND SURVEY MONUMENT MARKED AS NOTED

BASIS OF BEARINGS:
 SOUTH DAKOTA STATE PLANE COORDINATE SYSTEM-SOUTH ZONE

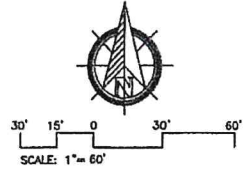
PREPARED BY:
TDG Engineers@ToweyDesignGroup.com * 147 Chishalm Drive * P.O. BOX 67 * Box Elder, SD 57719 * Phone 605.600.3758
 #TDG-025-090

FILED IN 2025 BY TOWEY DESIGN GROUP, INC. 11/17/25 11:17 AM 25-090

EXHIBIT 'A'
MAJOR DRAINAGE EASEMENT
 LOCATED IN LOT C AND LOT B REVISED OF TRACT 3
 BERGER SUBDIVISION
 OF SECTION 14, T2N, R8E, BHM
 PENNINGTON COUNTY, SOUTH DAKOTA



LINE TABLE		
LINE #	LENGTH	DIRECTION
L1	7.52	S87°58'21"E
L2	75.80	S87°58'21"E
L3	26.32	S27°15'21"E
L4	23.44	S87°58'39"E
L5	122.92	S03°21'26"W
L6	65.66	S26°01'49"W
L7	19.84	S87°55'38"W
L8	97.18	S06°38'02"W
L9	112.25	S20°20'55"W
L10	81.82	N87°55'20"W
L11	24.97	S87°55'20"E
L12	93.34	N13°36'34"W
L13	63.15	N03°21'58"E
L14	67.31	N30°39'40"E
L15	50.79	N28°55'00"W
L16	52.35	N07°43'24"W
L17	32.05	N42°20'53"E
L18	77.28	N11°50'58"E



LEGEND
 * DENOTES FOUND SURVEY MONUMENT MARKED AS NOTED
BASIS OF BEARINGS:
 SOUTH DAKOTA STATE PLANE COORDINATE SYSTEM-SOUTH ZONE

PREPARED BY:
TDG Engineers@ToweyDesignGroup.com * 147 Chisholm Drive * P.O. BOX 67 * Box Elder, SD 57719 * Phone 605.600.3758
 #TDG-025-090

11/17/25 11:17 AM 11/17/25 11:17 AM 11/17/25 11:17 AM 11/17/25 11:17 AM 11/17/25 11:17 AM